



# Proposed Changes to the Proposals Map

North Dorset Local Plan – 2011 to 2026 Part 1: Pre-submission Document

## Gillingham Southern Extension



# 1. Introduction

- 1.1 This document includes a set of maps that shows the proposed changes to the Proposals Map of the North Dorset District Wide Local Plan (2003).
- 1.2 Policy 2 – Core Spatial Strategy of the North Dorset Local Plan 2011 to 2026 Part 1 states that the settlement boundaries around the four main towns will be retained. The settlement boundaries will be retained unaltered around: Blandford Forum and Blandford St Mary, (on Inset Maps 2 and 2A); Shaftesbury (Inset Maps 37 and 37A); and Sturminster Newton (Inset maps 47 and 47A).
- 1.3 The settlement boundary around Gillingham (Inset Maps 15 and 15A) will be retained unaltered except to the south of the town, where it will be amended to accommodate growth in the form of a Strategic Site Allocation (SSA). The retained settlement boundaries will continue to be used for development management purposes until reviewed either through the North Dorset Local Plan Part 2: Site Allocations or a neighbourhood plan.

## Gillingham Southern Extension

- 1.4 The first map in this document is the Gillingham Southern Extension Proposals Map, which shows both the amended settlement boundary and the proposals for the development of the SSA. This map also appears as Figure 9.5 on page 261 of the main Pre-submission Document.

## Removed Settlement Boundaries

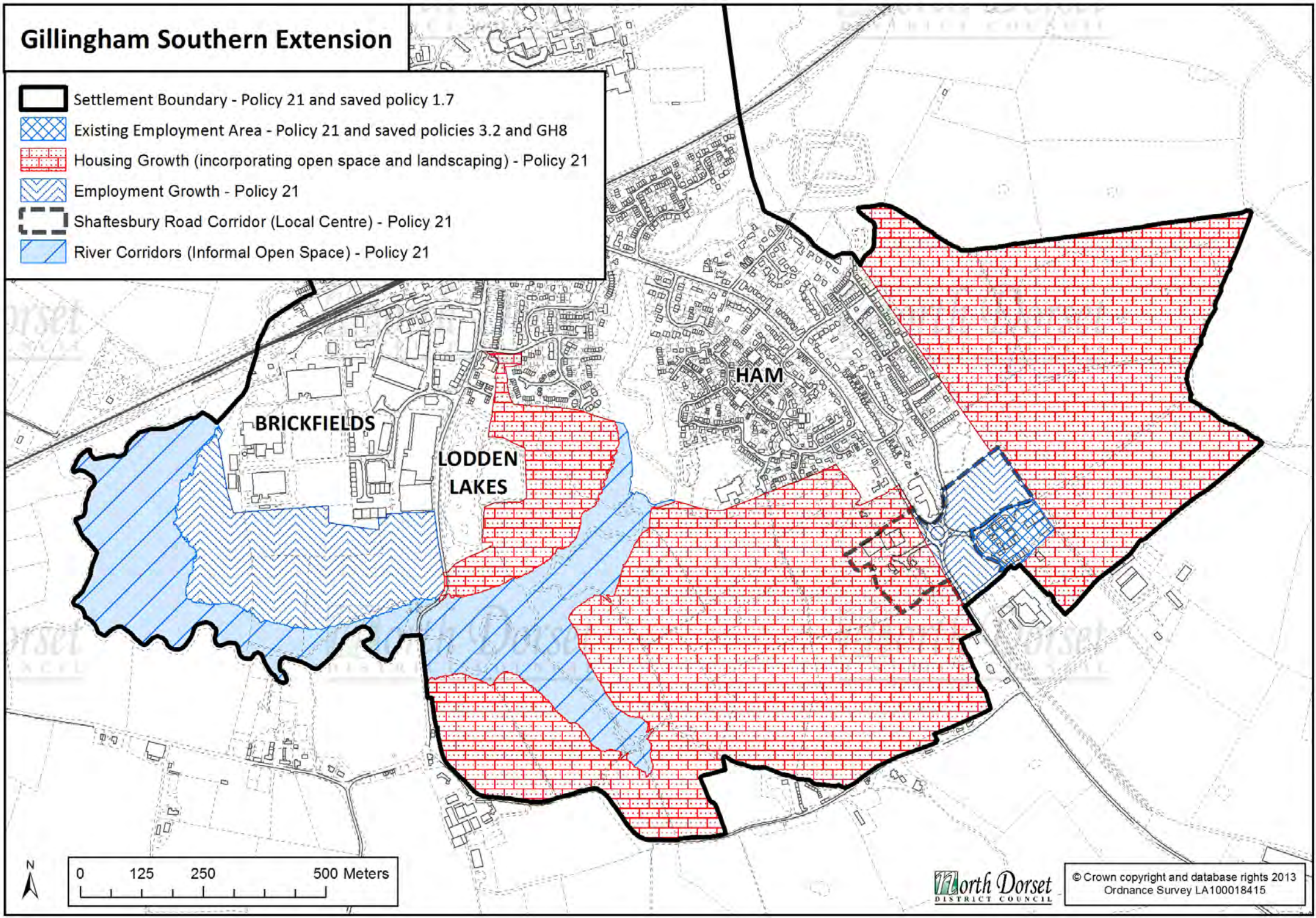
- 1.5 Other maps show the boundaries of other settlements in the District that will be removed from the Proposals Map. A list of the settlements where the boundaries will be removed appears in Figure B.1 on pages 380 to 382 of the main Pre-submission Document.





# Gillingham Southern Extension

-  Settlement Boundary - Policy 21 and saved policy 1.7
-  Existing Employment Area - Policy 21 and saved policies 3.2 and GH8
-  Housing Growth (incorporating open space and landscaping) - Policy 21
-  Employment Growth - Policy 21
-  Shaftesbury Road Corridor (Local Centre) - Policy 21
-  River Corridors (Informal Open Space) - Policy 21









Planning Policy  
North Dorset District Council  
Nordon  
Salisbury Road  
Blandford Forum  
DT11 7LL

[www.dorsetforyou.com](http://www.dorsetforyou.com)

Published November 2013

© North Dorset District Council 2013