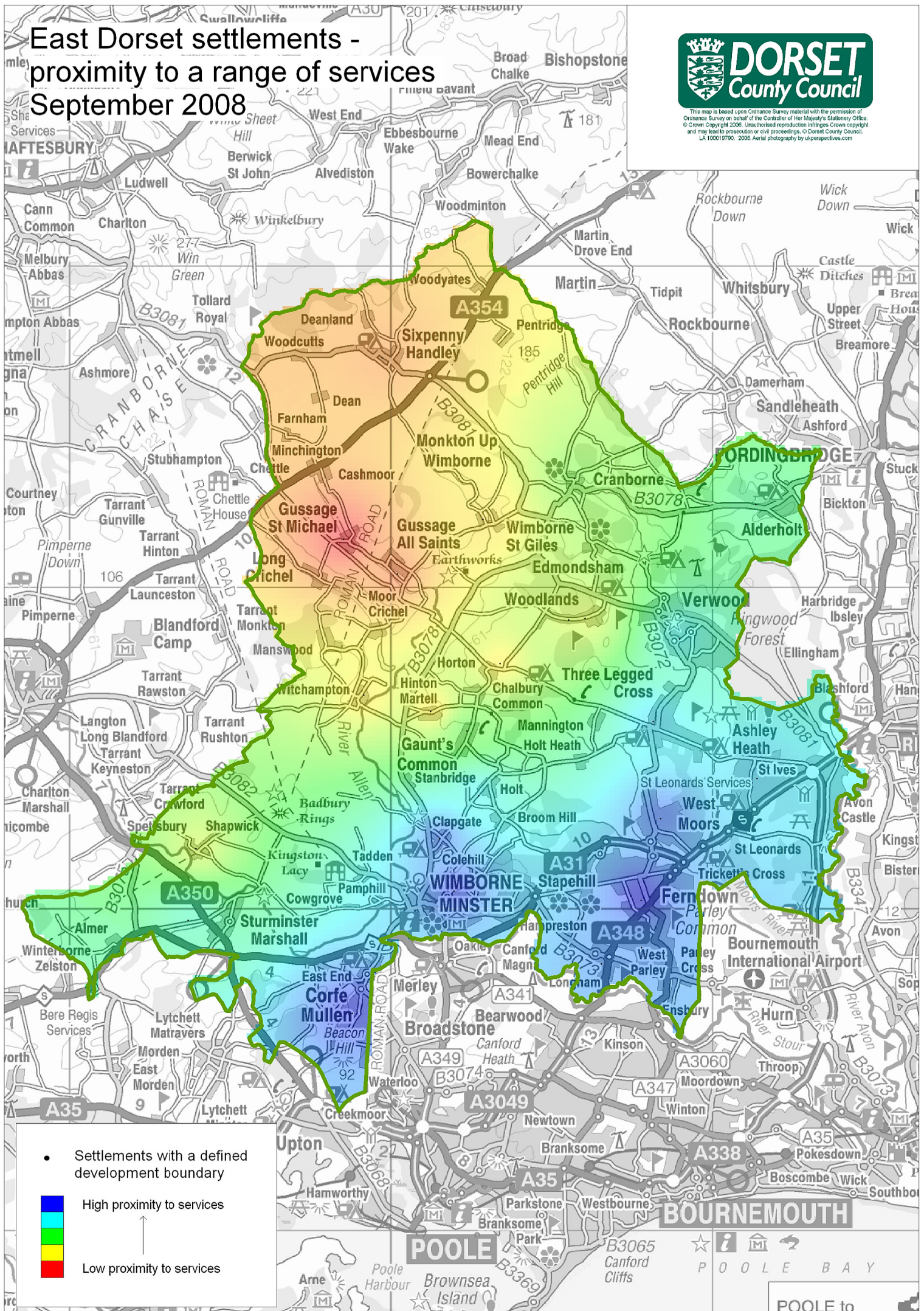


East Dorset settlements - proximity to a range of services

September 2008



This map is based upon Ordnance Survey material with the permission of Ordnance Survey on behalf of the Controller of Her Majesty's Stationery Office. © Crown Copyright 2006. Unauthorised reproduction infringes Crown copyright and may lead to prosecution or civil proceedings. © Dorset County Council. LA 100019700. 2006. Aerial photography by ukperspectives.com



- Settlements with a defined development boundary
- High proximity to services
- Low proximity to services



POOLE to