



Working Together
Communities
etc.

Affordable
Housing
Travel &
Access
Generations
Culture
& Life
Style
Youth
High Quality
Environment

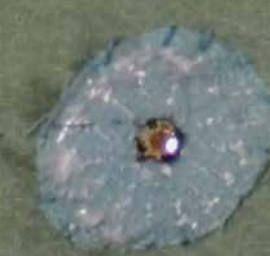
Older
Peoples
Forum

Christchurch Community
Partnership

Reduce
Reuse
Recycle

Youth on the
Age

Children
Community
Families





COMMUNITY PLAN

2007 — 2010

Find out how you can make a difference in Christchurch

A Letter from the Chair

Dear Reader
This reproduction of the specially commissioned artwork by Sarah Leithead and these accompanying written details are about the Christchurch Community Partnership and its plans for the future of the Borough of Christchurch. In the four years since the first Community Plan was written, it is remarkable what the citizens of Christchurch and many others with the best interests of this beautiful Borough at heart have achieved.

The majority of the priorities identified in that first Community Plan have been achieved but further consultations with Christchurch residents, young and old, through 2006/7 have shown that there is still more to do. The consultation results have been considered and refined into projects by the appropriate one of the seven Action Groups and added to their Action Plans. Many of the projects appear on these pages.

The Christchurch Community Partnership is an independent organisation built on a foundation of trust and a shared vision for the future of this very special Borough that is inclusive and creative. Everyone's ideas are valuable. It is a growing network of statutory, business and voluntary organisations and individuals with interests in common, that offers reciprocal benefit to those prepared to engage with it. It is a different way of getting things important to the community done. The Christchurch Community Partnership is here for your benefit, for those who live in, work in, and visit Christchurch.

The Action Groups meet quarterly and are open to anyone to attend – just turn up. To read the more detailed Action Plan, find out dates of meetings or events or read the minutes of the meetings visit our website www.christchurchmatters.org or contact the Community Co-ordinator at the Civic Offices, Bridge Street.

Thank you
Dr Bob Gilbertson
Dr Bob Gilbertson
Chair, Christchurch Community Partnership

Children's Quiz

Our Community Partnership tree displays many different aspects of life in Christchurch. Look on the other side. Can you find....

- A lady bird
- A fish
- A bicycle
- A fox
- A bird's nest

How many flowers can you count?

How many people are there?

How many leaves can you see?

How many birds can you count?

The ladybird is on the tree trunk on the left side of the picture; the fox is just above the yellow banner. The bicycle is near the top right corner; the fish is at the foot of the tree on the left, and the bird's nest is at the top on the right. Flowers = 5; People = 5; Leaves = 15; Birds = 3.

How to get involved

Christchurch Community Partnership is open to all residents, groups, local businesses and visitors with an interest in Christchurch. All action groups and local Partners & Communities Together (PACT) meetings are open to the public and the details of these meetings can be accessed from www.christchurchmatters.org.uk. You can also contact the partnership at the following email address communitypartnership@christchurch.gov.uk; or by contacting the partnership support team on 01202-495088. You can also request copies of the plan in large print from the support office.

The Partnership organises an Annual Conference and road shows at different locations throughout the borough so we can make it easier for you to keep up to date with the projects the partnership is working on and give you an opportunity to discuss how you would like to be involved in. The Partnership also seeks to ensure there is something for everyone in the portfolio of projects delivered annually through the community planning process across the borough.

The annual Christchurch Community Action Week is also organised in March/April to capture all events being held in Christchurch. All are invited to advertise and participate in these spring time events. A half yearly newsletter and regular articles on www.christchurchmatters.org.uk also keep partners engaged with local events throughout the year.

c/o Civic Offices
Bridge Street
Christchurch
Dorset
BH23 1AZ

Tel: 01202 495088
Fax: 01202 495108

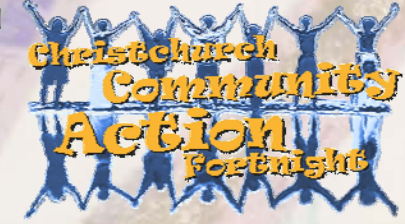
Email: communitypartnership@christchurch.gov.uk
Website: www.christchurchmatters.org

Culture, Learning & Lifestyle Action Group

Vision: A Christchurch valued for its range of cultural and educational opportunities and where the quality of life is high.

Christchurch Community Action Fortnight

Christchurch is full of people giving voluntarily of their time, energy and skills to benefit the community. The Community Action Fortnight showcases all their events, meetings, and exhibitions taking place in March/April each year by publicising them to promote awareness and increase membership. We successfully supported 78 events in the first year and 99 events in the second year. We want to get bigger and better, so register your event for next year or come and help us to organise the fortnight!



2012 Olympics

Many of us dream of going for gold at the Olympics! The Partnership is taking advantage of the likely community benefits of the Olympics by working with sports clubs to offer more young people the opportunity to get involved in new activities. We could even help to produce an Olympic Champion for 2012!

Physical Activity Network

Together with the Christchurch & District Sports Council, the Partnership is creating a Physical Activity Network for Christchurch, to give all clubs, coaches, venues and potential users access to information and to network. We hope this will become a one-stop-shop for physical activity in Christchurch. For this to succeed, we want you to get involved! Just register your details with us and you will be put in touch with a whole range of other like-minded people.

Heritage

Christchurch is renowned for its heritage, which attracts many tourists and visitors. The Partnership is working with local people to encourage more residents to visit nearby attractions. As a result:

- We are helping local people to train as Walk Leaders and encouraging friends and family to get involved in the town's heritage walks.
- We are working with schools and community groups to increase understanding of the role Christchurch's heritage plays in its history and economy.

Health & Care Action Group

Vision: A Christchurch where good health is promoted, ill health treated and vulnerable groups supported.

HomeStart

With other local contributors, the Partnership has helped to fund the scheme in Christchurch. HomeStart is a voluntary home-visiting scheme providing friendship and support to families experiencing difficulties in their lives. The scheme recruits and trains volunteers to visit families in their own homes and provides parent-to-parent support.

Self-Guided Health Walks and Physical Activity

Together with the Council's Leisure Service, the Partnership has produced a pack of 10 Health Walks to encourage people to use nearby open spaces for physical activity. Pick up a pack from any doctor's surgery or other community outlets and take your friends and family for a walk!

Promoting Healthy Eating

The Partnership is working with the Christchurch Food Festival and the Christchurch Food Education Trust to provide cookery workshops for all ages.

Also under development is a Local Food Trail for Christchurch, which will allow families to visit a number of local farmers and producers to learn about food production and the benefits of local food.

Vulnerable Old People

Reducing isolation and increasing mobility and confidence in vulnerable old people is a key action for the Partnership. We support falls prevention campaigns and fund the Community Transport service, Dial-A-Bus, for Christchurch.

The Partnership is currently developing a Friends of Dial-A-Bus service for Christchurch to provide support to our community transport passengers by assisting with shopping. Also under development is an "older people's befriending" service for Christchurch to help to widen social networks and reduce isolation.

Community Safety Action Group

Vision: A Christchurch where crime levels are low and where people feel safe.

The Community Safety Action Group is working to reduce crime and fear of crime across the borough. You can get involved by attending local neighbourhood PACT meetings (Partners and Communities Together). These meetings allow you to raise any issues you might have about where you live. For more information about PACT in your area please contact your local Safer Neighbourhood Team on 222222.

Tackling Fear of crime – Christchurch is one of the safest places to live in the UK, but does everyone realise that? We want to make people feel safer and we do this by publicising our successes through our Newsletter and by supporting local projects.

The Multi Agency Youth Outreach Service (MAYO) is a real success story. The service allows volunteers and agencies to work together to provide a co-ordinated approach to engaging with young people where they like to hang out across the borough. The Community Safety Action Group successfully obtained funding for a van to enable workers to take resources to the young people. You will see our outreach workers out and about on Friday nights talking and providing information to young people.

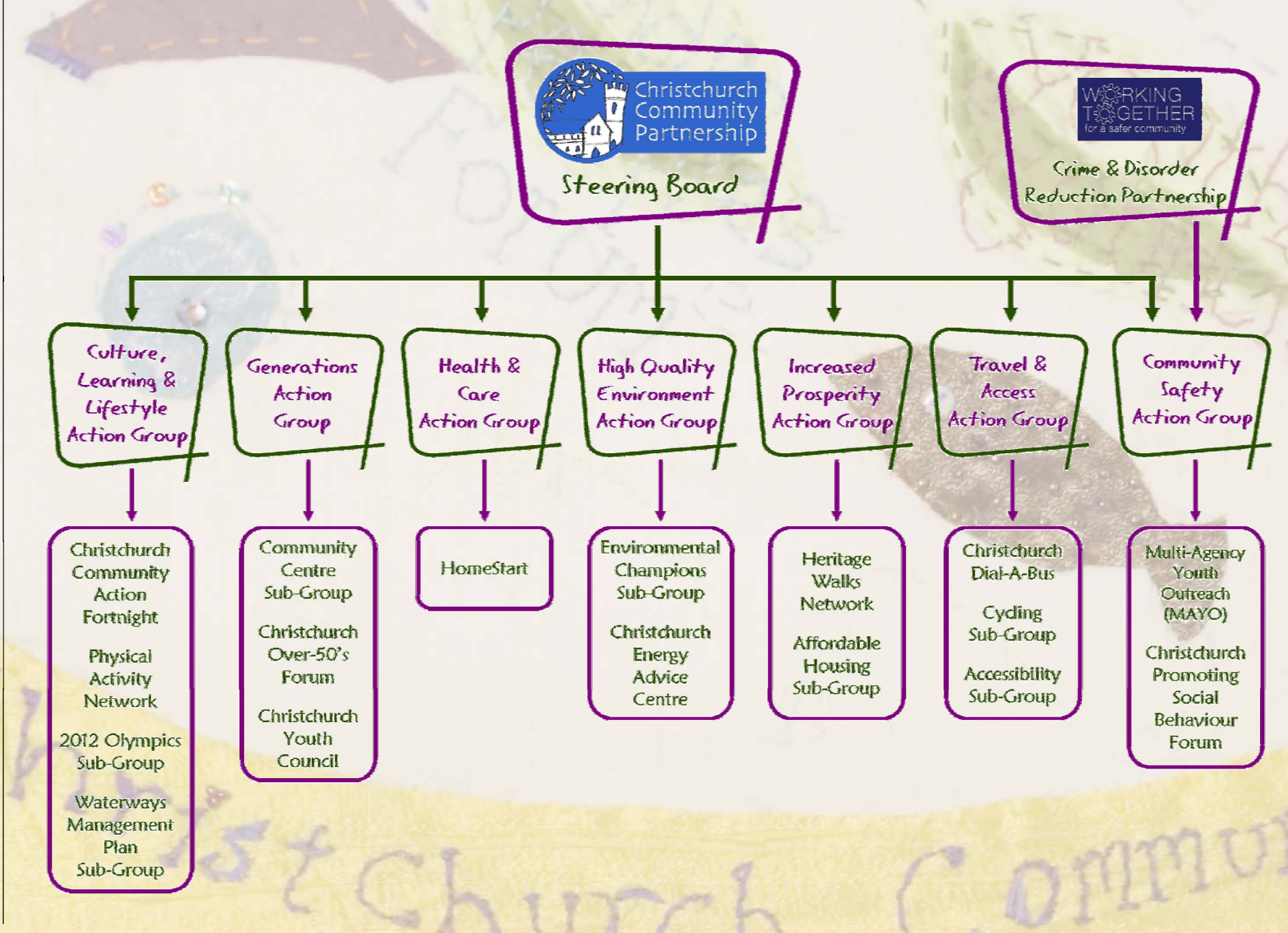


The Bike Project The YISP Bike Project brought together and taught a range of young people skills in bike maintenance, safety and security. The project was so successful we are hoping to repeat it so more young people can learn how to use their bikes safely.

Alcohol Awareness A multi-agency alcohol referral scheme is being piloted in Christchurch which will refer under-aged drinkers who come to the attention of the Police to a session with a Drug/Alcohol worker to discuss the impact of binge drinking.

For more information on Community Safety and current projects visit: www.dorsetworkingtogether.org.

Community Partnership Structure Diagram



High Quality Environment Action Group

Vision: A Christchurch where the high-quality natural and built environment is protected and enhanced.

Environmental Champions Scheme

The Environmental Champions project aims to ensure a clean and safe environment for residents of Christchurch by encouraging active community involvement in defined neighbourhood management areas across the Borough. The Partnership has successfully secured funds to support local environmental community projects, which improve your local area. Please contact us with your ideas!



Community Litter Picks

By encouraging people to take part in a community litter pick in their area a sense of pride in their surroundings and a community spirit is developed. Residents are given the opportunity and the equipment to clean the streets, hedges and green spaces of the litter that has accumulated there.

Providing Energy Saving Advice

The Partnership actively supports the Christchurch Energy Advice Centre, based in Christchurch Library. The Centre provides energy saving advice and is entirely run by volunteers.

Christchurch Railway Station

An ongoing project is the creation of a "Friends of" group for Christchurch Station. The aim of the group is to create a more suitable and pleasant railway entrance to Christchurch, by improving the aesthetics and the signage leading from the station to the attractions of Christchurch. Have you got some ideas? Then give us call.

Reducing Packaging

Introducing re-usable cotton bags is just one of the ways the Partnership is seeking to minimise the impact of plastic bags on the environment (it takes about 500 years for a plastic bag to decompose!). The ultimate goal is to make Christchurch a plastic bag-free zone.

Involving People & Valuing Volunteers

This Community Plan has already involved the input of many hundreds of people. It is full of those people's ideas about how to make Christchurch an even better place to live and work. And inside each of those ideas are some opportunities – ways that YOU can help us all to make it happen.

Getting involved is good. It's fun for you, you have the opportunity to develop new skills and receive training and you get the pride of knowing that you've made a valuable contribution. And it's good for Christchurch too, because every small contribution adds up to achieving what we all want – a vibrant, safe, healthy environment that we all care about whatever our background.

Here are just a few examples of the different ways you can get involved. Some might be just a one-off involvement, as little as just one afternoon. Others might be a more regular involvement. See if there's something here that appeals to you or draws on your particular skills or interests! Remember, Christchurch Community Partnership is here to help you with practical and sometimes even financial support for getting any of these and many other actions going.

- Here are some ideas to get you going:
- Do you love showing friends and family around Christchurch? Train as a Walk Leader, and use your social networks to encourage involvement in heritage walks or healthy walks. Or become a "Heritage Champion", and encourage other people to visit Red House Museum, Highcliffe Castle, or the Priory.
 - Fancy bringing continental café culture to Christchurch? Join the group talking to shoppers and cafés about trying out a late-night café evening in the town centre. And then bring a group of friends, or your evening class, to join in!
 - Excited about the new community centre for the town? Come and give your suggestions on what you'd like to see inside it, and join an already vibrant group helping to raise money.
 - Do you enjoy gardening? Start a tree-planting scheme, perhaps on an industrial estate, a recreation ground, or even in your own street.
 - Are you passionate about shopping locally and reducing food miles? Ever thought it would be nice if there was a Local Food Trail for the

Increased Prosperity Action Group

Vision: A Christchurch which is economically vibrant and where people want to live, study, work, bring up children, be supported through unemployment and retire.

Involving Businesses

Businesses are the life force of any community, providing jobs for people and contributing to the prosperity of the community. Christchurch's businesses are important to the Partnership because they have a valuable contribution to make to the community by sponsoring and providing volunteers for a variety of community projects.

In return the Partnership engages with local businesses through business forums to encourage them to work together to overcome common issues, such as health, access, recruitment and skills development, and to help them to improve the environment around their premises with projects such as bulb planting and litter picks.

Evening Café Culture

Since Christchurch attracts many visitors and tourists, especially in summer, the Partnership is investigating the possibility of evening local cafés to encourage tourists and local residents into the town centre during the evening. A small group of people is required to help us carry out a small survey asking people using the cafes if they would use them in the evenings. If you would like to contribute to this project, why not give us a call!

Heritage Walks Network

The Network produces an annual leaflet publicising all guided walks which take place in Christchurch throughout the season. New guides are always sought after, so if you would like to be included in next year's leaflet please contact us.

Affordable Housing

To raise awareness of the need for a higher percentage of appropriate affordable and social housing in the borough. Together we can:

- Create incentives for cash-poor people in large houses to move into smaller housing
- Publicise the need for better use of empty properties and encourage their return to appropriate use

Generations Action Group

Vision: A Christchurch where relationships between people of different generations are strong and where all sections of the community are valued.

A new Community Centre for the Town

Every community needs a place they call their own. This is the Partnership's flagship project. We are working closely with many partners and volunteers to develop a proposal for a new Community Centre to replace Druit Hall in Druit Gardens.

Providing Play & Leisure Facilities in the Community

Local people know what is needed in their local area. We encourage you to get involved in the decision making about play provision across Christchurch.

Intergenerational Activities

Projects that bring young and old together are certainly worth promoting and supporting to encourage sharing of skills and building of relationships across the generations.

Christchurch Over-50's Forum

The Forum allows the older generation to explore the issues affecting them and to make new friends. Running successfully for the last few years, the Forum has proven effective in benefiting over-50's and offers many opportunities for them, and you, to get involved.

Supporting Young People

Young people are the future of any community and need the support of the community. To facilitate this a proposal for an E2E (Entry to Employment) training base in Christchurch where young people can easily access vocational training is being developed.

Christchurch Youth Council

The Youth Council enables young people to have a say on local issues and to get involved in local democracy. Their views can really make a difference in the decision-making process and how it affects the local community. The Youth Council also organises and promotes events, such as the "Whatever!" variety show, which showcased local young talent at the Regent Centre.

Travel & Access Action Group

Vision: A Christchurch where travel is efficient, affordable and sustainable.

Christchurch Dial-A-Bus

Dial-A-Bus provides wheelchair accessible transport in Christchurch for older people and people with disabilities who find it difficult to use existing transport services. The service was set up by volunteers through the Partnership and needs voluntary help to attract funding, provide support to the service to help it grow and cater for more people in Christchurch. Please contact us if you can help in any way.



Promoting Cycling

The Partnership has an active cycling group who work together to address cycle issues across Christchurch. Cycle routes, bike storage, promoting cycling, cycle maintenance and safety are just some of the issues being dealt with.

Access For All

The Accessibility Sub-Group provides advice on access issues to businesses and other agencies across Christchurch. The aim is to:

- Review current public and community transport provision
- Work to reduce traffic congestion
- Review and update signage to facilities, parking, shops and other places of interest in the Borough

Sustainable Transport Campaign for Christchurch

Funding has been successfully obtained through the Travel & Access Group to help promote alternative forms of transport in Christchurch. Congestion in Christchurch was a key issue raised in our consultation and we hope to encourage people in Christchurch to leave their car at home at least once a week and try something different!

Making It Happen

Christchurch Community Partnership (CCP) have secured a small annual flow of funding to support the delivery of the projects identified above and any emerging activities you may be considering in your area/group. In addition to this CCP will work in conjunction with action groups to access any additional funding from other sources for important projects as they emerge through the community planning process.

The CCP will commission projects that address and respond to locally identified need and contribute to the realisation of the outcomes in the community plan and Dorset wide community strategy and local area agreement.

Eligible projects will:

- Be responsive to needs identified within the Christchurch Community Plan and contribute towards realisation of a LAA targets.
- Have secured the funds required to implement the project within the financial year.
- Have agreement from the volunteer team identified to make it happen

Action/community groups should consider the following when requesting funding:

- Evidence of consultations with beneficiaries, partners, suppliers, other AGs etc
- Providing verifiable and realistic project cost
- Ensuring projects' costs provide value for the money requested
- Getting planning and any other permissions (where applicable/required)
- Agreeing the process for guiding project activities towards the desired outcomes
- Timescale for delivering the project within the financial year
- Agreeing the process to monitor the achievement of desired outcomes
- Some way of maintaining the desired outcomes over time
- Ensuring there is something in every project for everyone

If you need support to make it happen do contact the Community Strategy Officer, on 01202-495088, or visit www.christchurchmatters.org.

Get involved and share our success!