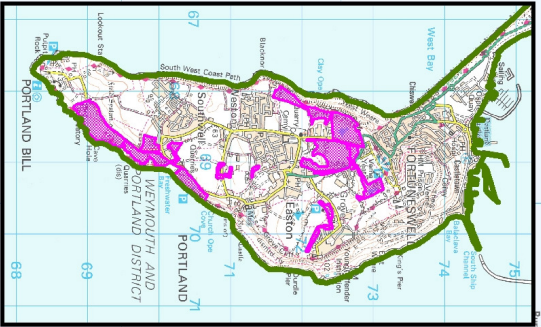
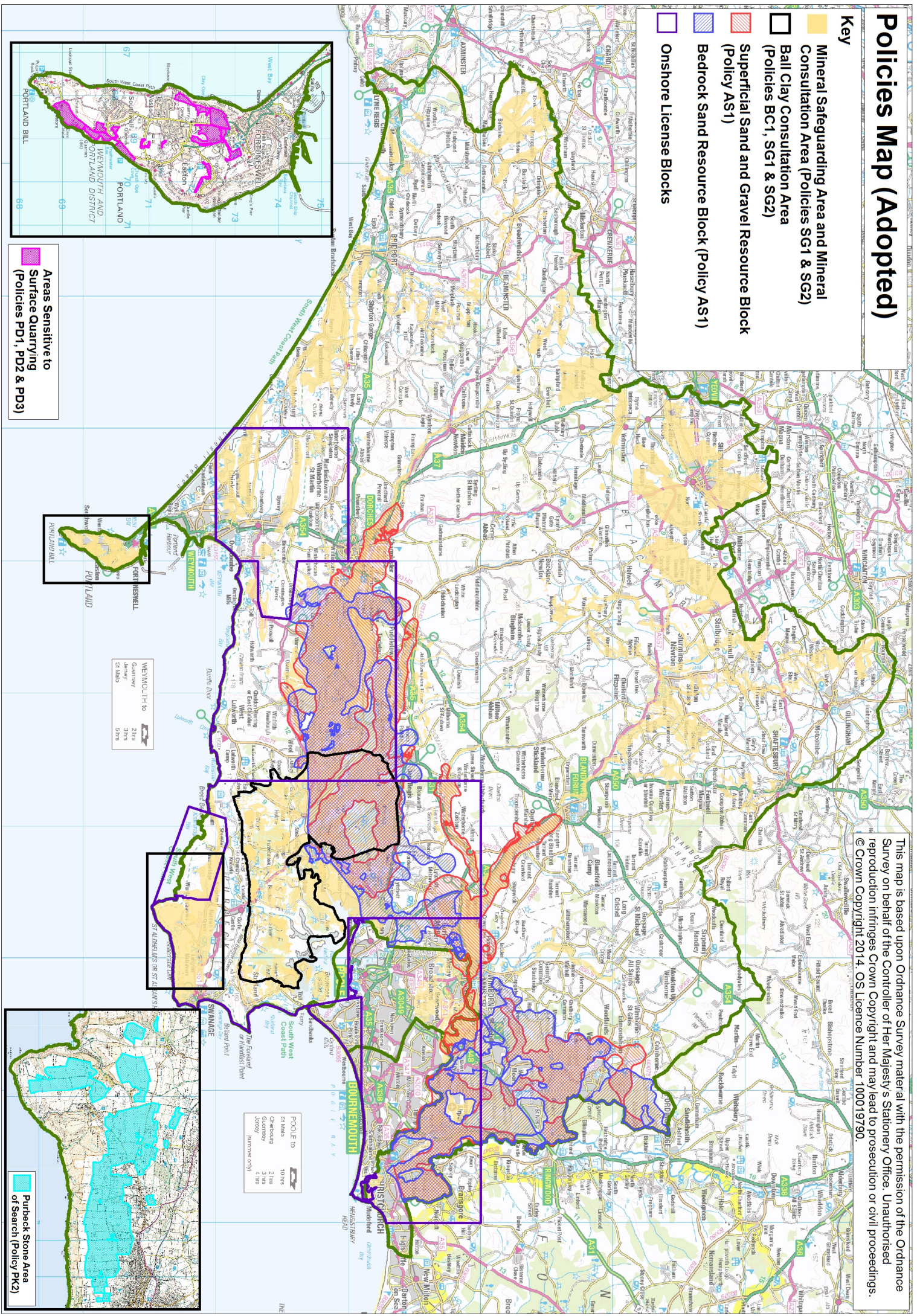


Policies Map (Adopted)

This map is based upon Ordnance Survey material with the permission of the Ordnance Survey on behalf of the Controller of Her Majesty's Stationery Office. Unauthorised reproduction infringes Crown Copyright and may lead to prosecution or civil proceedings.
© Crown Copyright 2014. OS Licence Number: 100019790.

- Key**
- Mineral Safeguarding Area and Mineral Consultation Area (Policies SG1 & SG2)
 - Ball Clay Consultation Area (Policies BC1, SG1 & SG2)
 - Superficial Sand and Gravel Resource Block (Policy AS1)
 - Bedrock Sand Resource Block (Policy AS1)
 - Onshore License Blocks



Areas Sensitive to Surface Quarrying (Policies PD1, PD2 & PD3)



Weymouth to

Quartermay	2 hrs
Jarvis	3 hrs
St Mark	5 hrs

POOLE to

St Mark	10 hrs
Christchurch	2 hrs
Wareham	2 hrs
Dorchester	4 hrs
Dorset	4 hrs
(summer only)	

