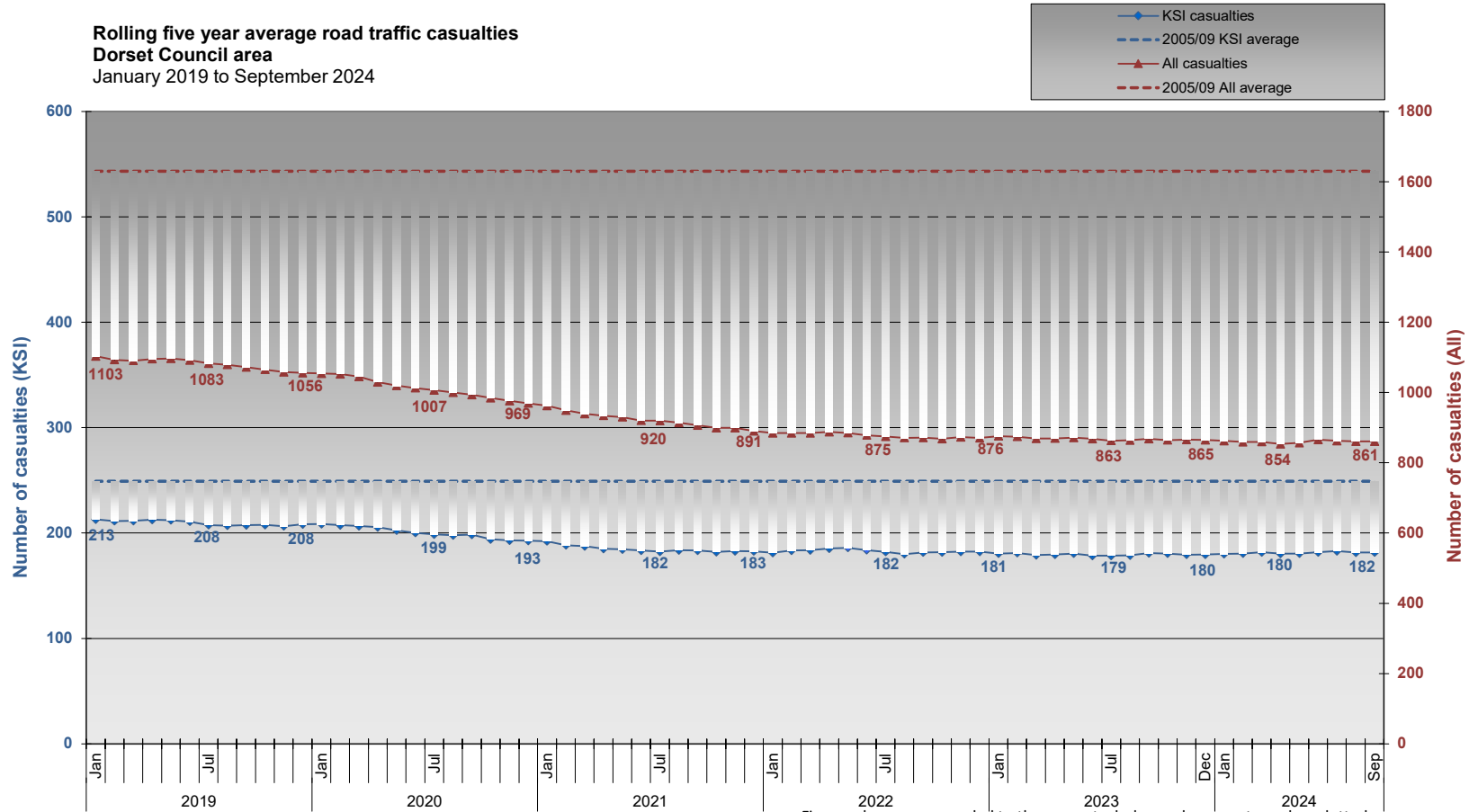


**Rolling Five Year Average  
Road Traffic Casualties  
January 2019 to September 2024**

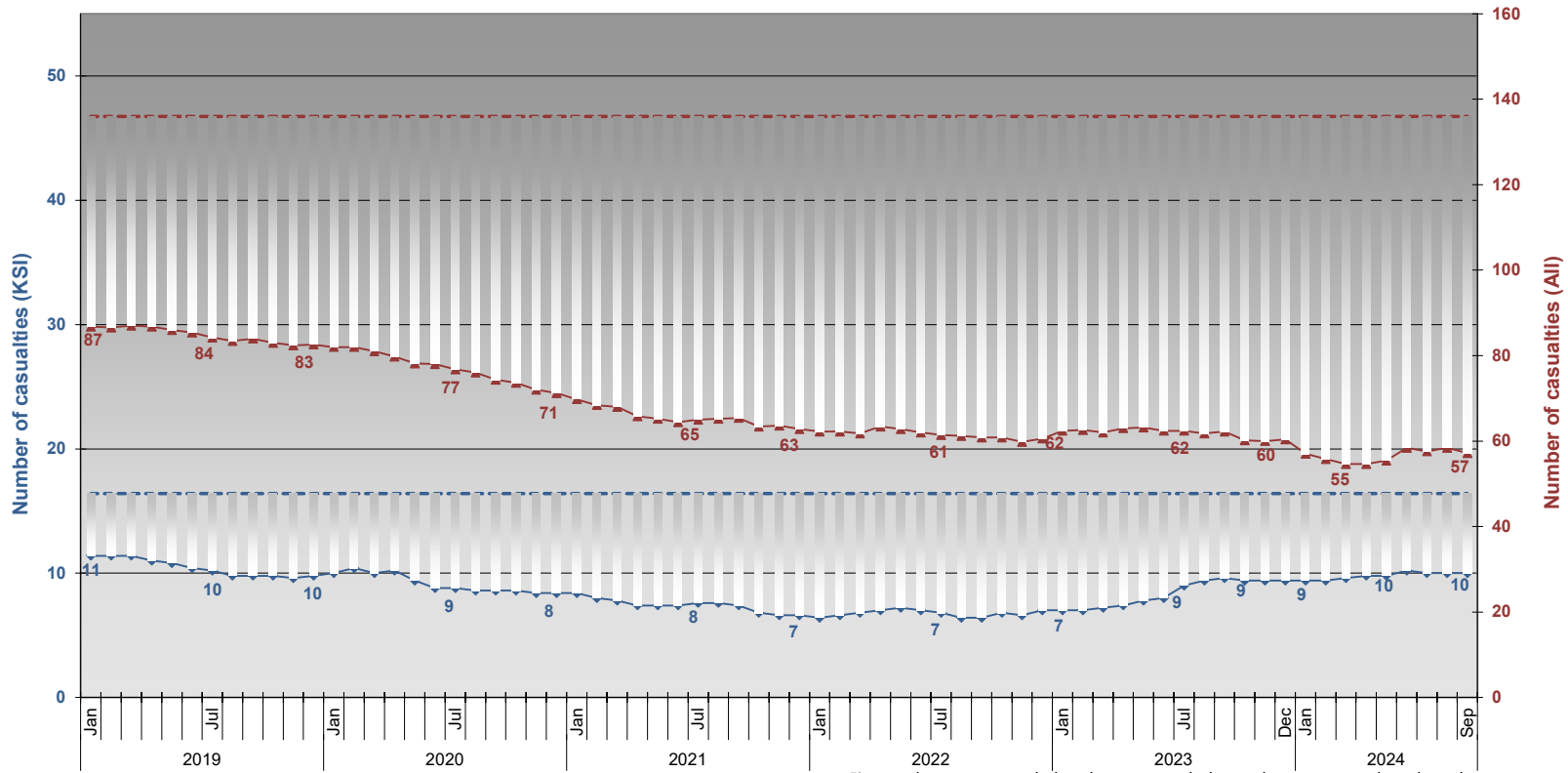
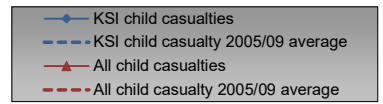
**KSI = Killed or Seriously Injured**

**Rolling five year average road traffic casualties**  
**Dorset Council area**  
 January 2019 to September 2024



Figures shown are rounded to the nearest whole number, exact number plotted.  
 Figures included in the above chart are for the Dorset Council area only  
 Figures for 2022 are subject to change until signed off with the DfT early in 2024

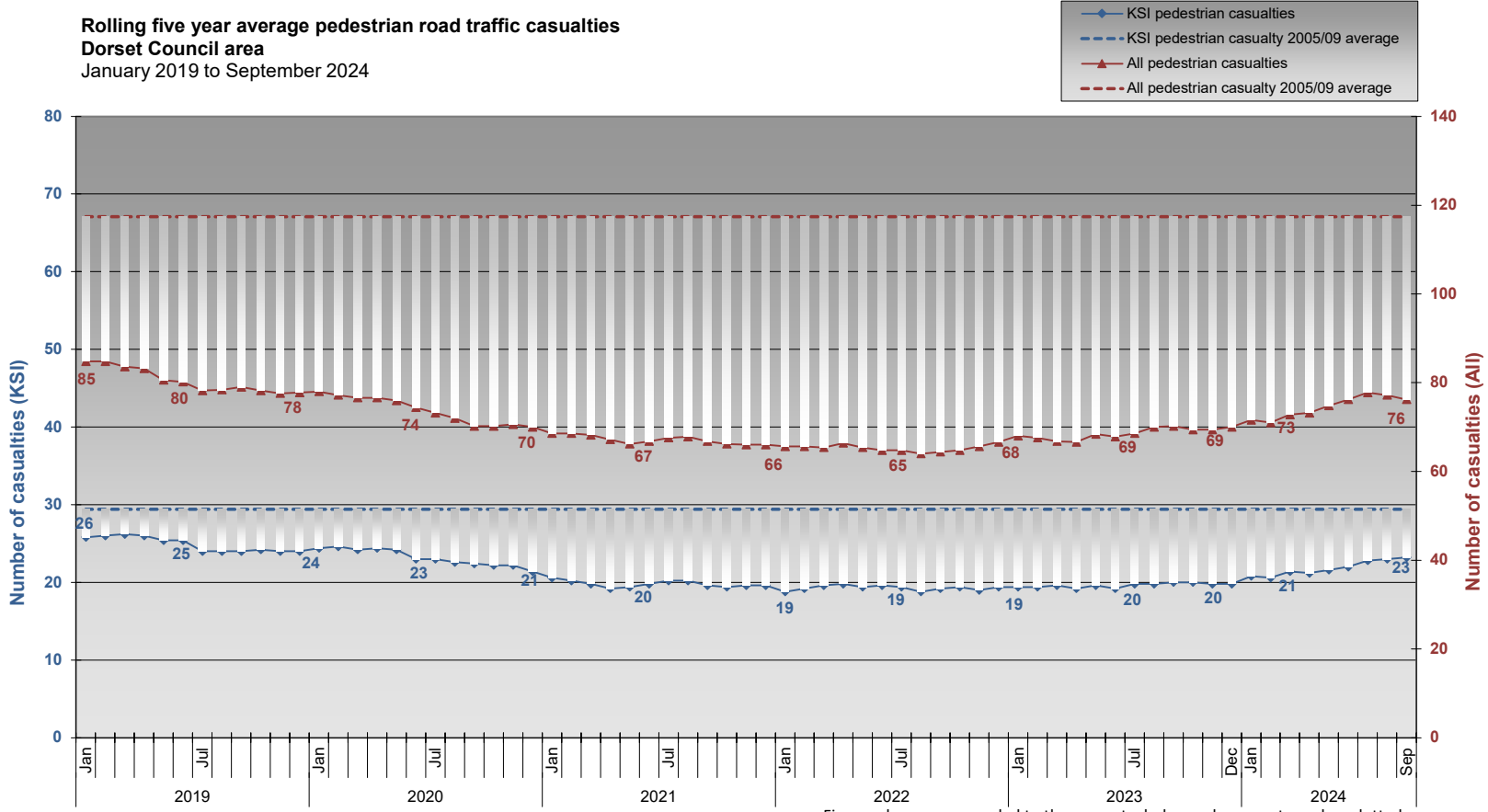
**Rolling five year average child (0 - 15 years) road traffic casualties  
Dorset Council area  
January 2019 to September 2024**



Figures shown are rounded to the nearest whole number, exact number plotted.  
 Figures included in the above chart are for the Dorset Council area only  
 Figures for 2022 are subject to change until signed off with the DfT early in 2024

The majority of child casualties are car passengers and only a small proportion of child casualties both all and KSI occur when travelling to or from school.

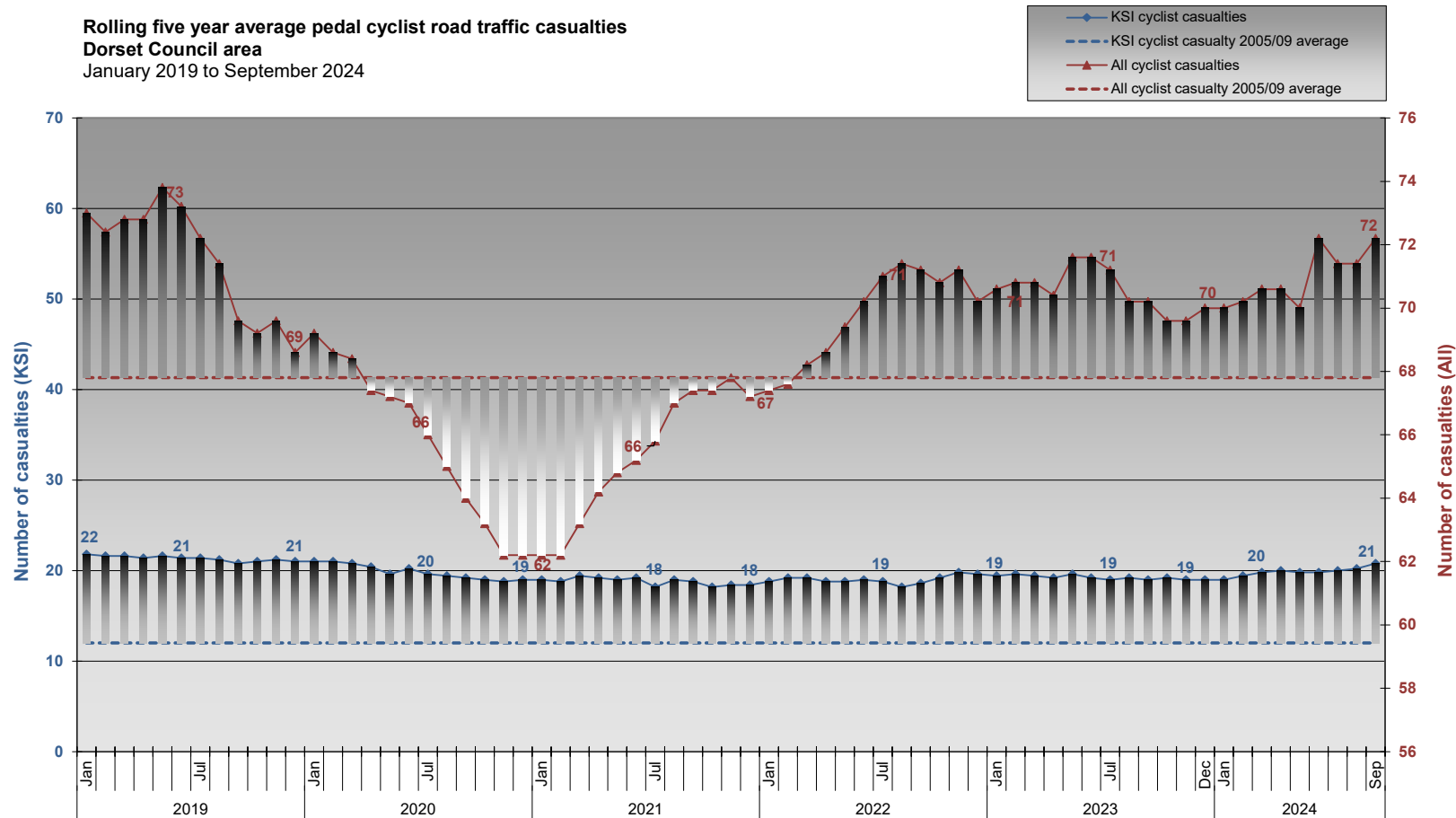
**Rolling five year average pedestrian road traffic casualties**  
**Dorset Council area**  
 January 2019 to September 2024



Figures shown are rounded to the nearest whole number, exact number plotted.  
 Figures included in the above chart are for the Dorset Council area only  
 Figures for 2022 are subject to change until signed off with the DfT early in 2024

The majority of pedestrian casualties are adults.

**Rolling five year average pedal cyclist road traffic casualties**  
**Dorset Council area**  
 January 2019 to September 2024

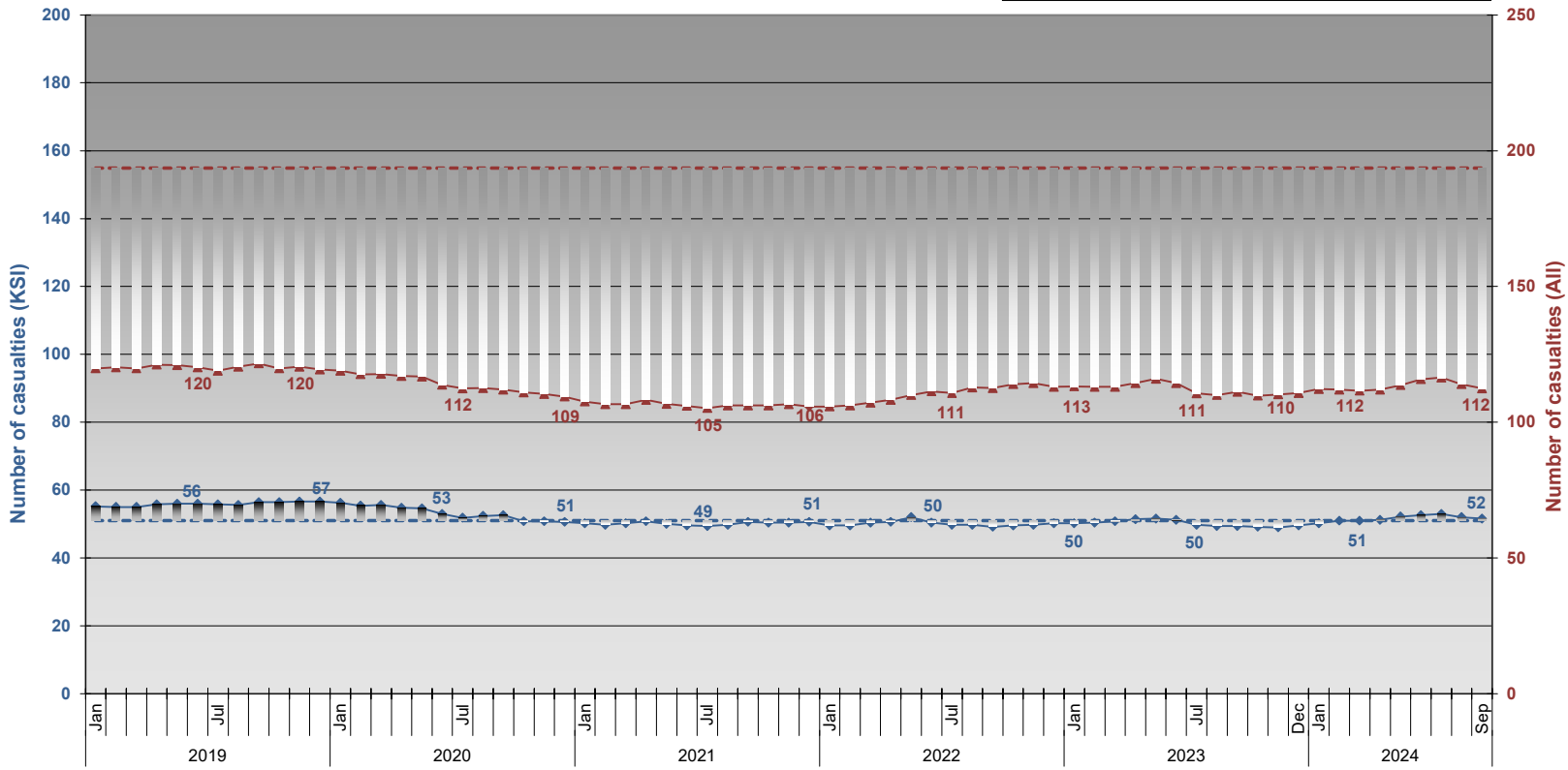
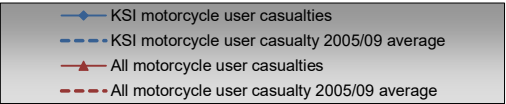


Figures shown are rounded to the nearest whole number, exact number plotted.  
 Figures included in the above chart are for the Dorset Council area only  
 Figures for 2022 are subject to change until signed off with the DfT early in 2024

Cyclist casualties are the only road user group to have consistently risen above the 2005/9 average for both all and KSI casualties; this is also the case regionally and nationally. An increase in the number of cycle journeys is cited as one of the possible reasons for this increase.

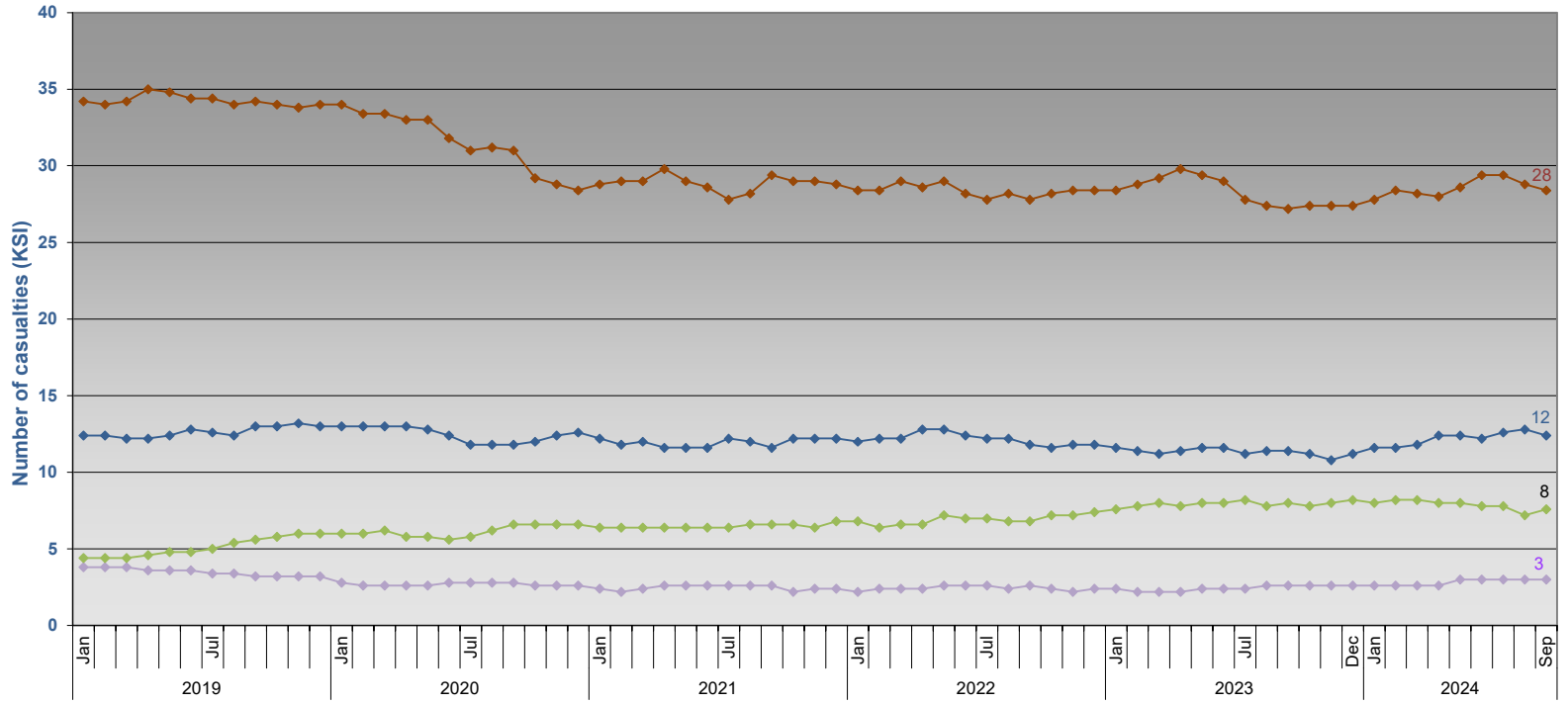
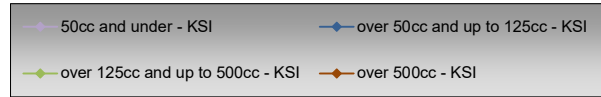
The majority of cyclist casualties are adults.

**Rolling five year average motorcycle user road traffic casualties**  
**Dorset Council area**  
 January 2019 to September 2024



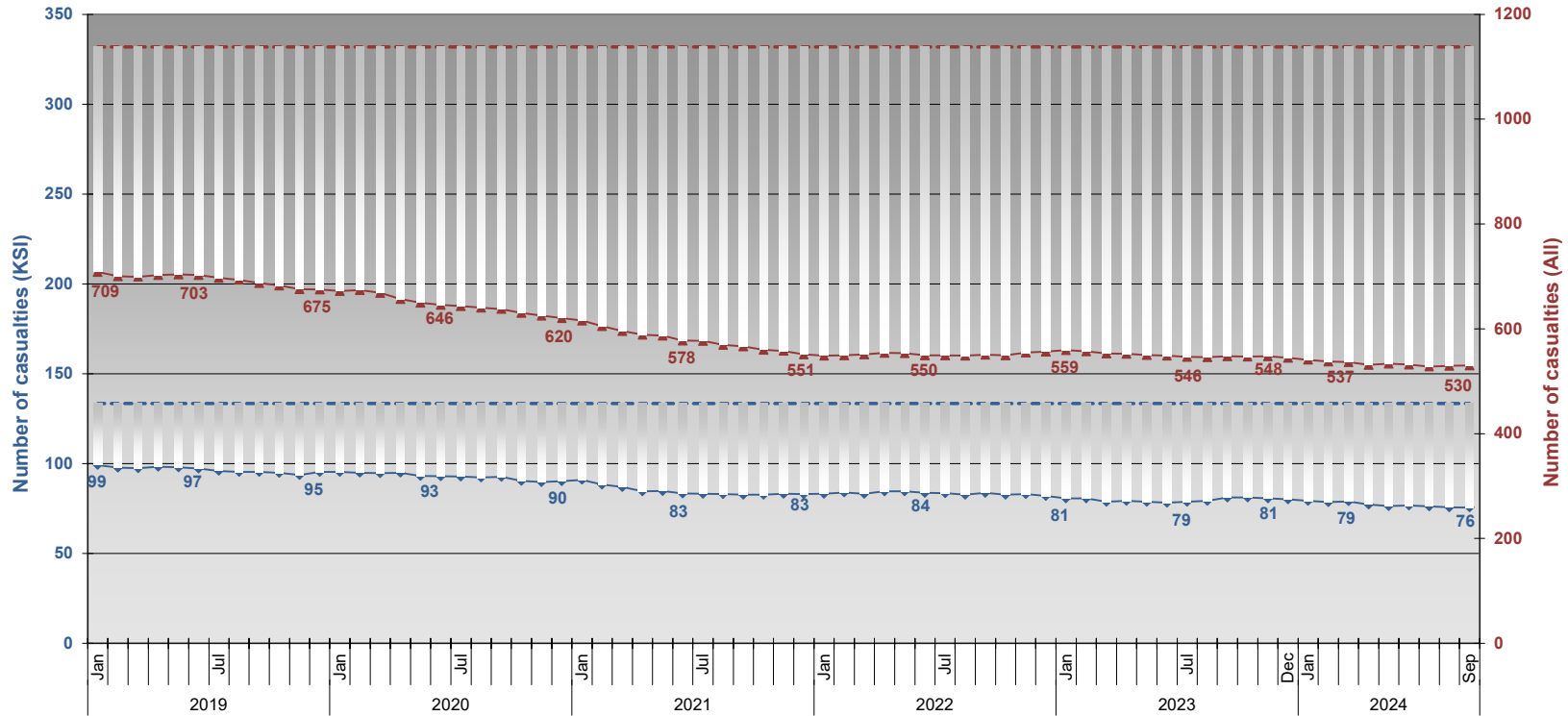
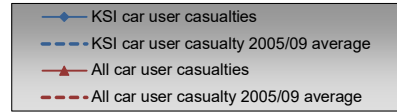
Figures shown are rounded to the nearest whole number, exact number plotted.  
 Figures included in the above chart are for the Dorset Council area only  
 Figures for 2022 are subject to change until signed off with the DfT early in 2024

**Rolling five year average motorcycle user KSI road traffic casualties**  
**Dorset Council area**  
 January 2019 to September 2024



Figures shown are rounded to the nearest whole number, exact number plotted.  
 Figures included in the above chart are for the Dorset Council area only  
 Figures for 2022 are subject to change until signed off with the DfT early in 2024

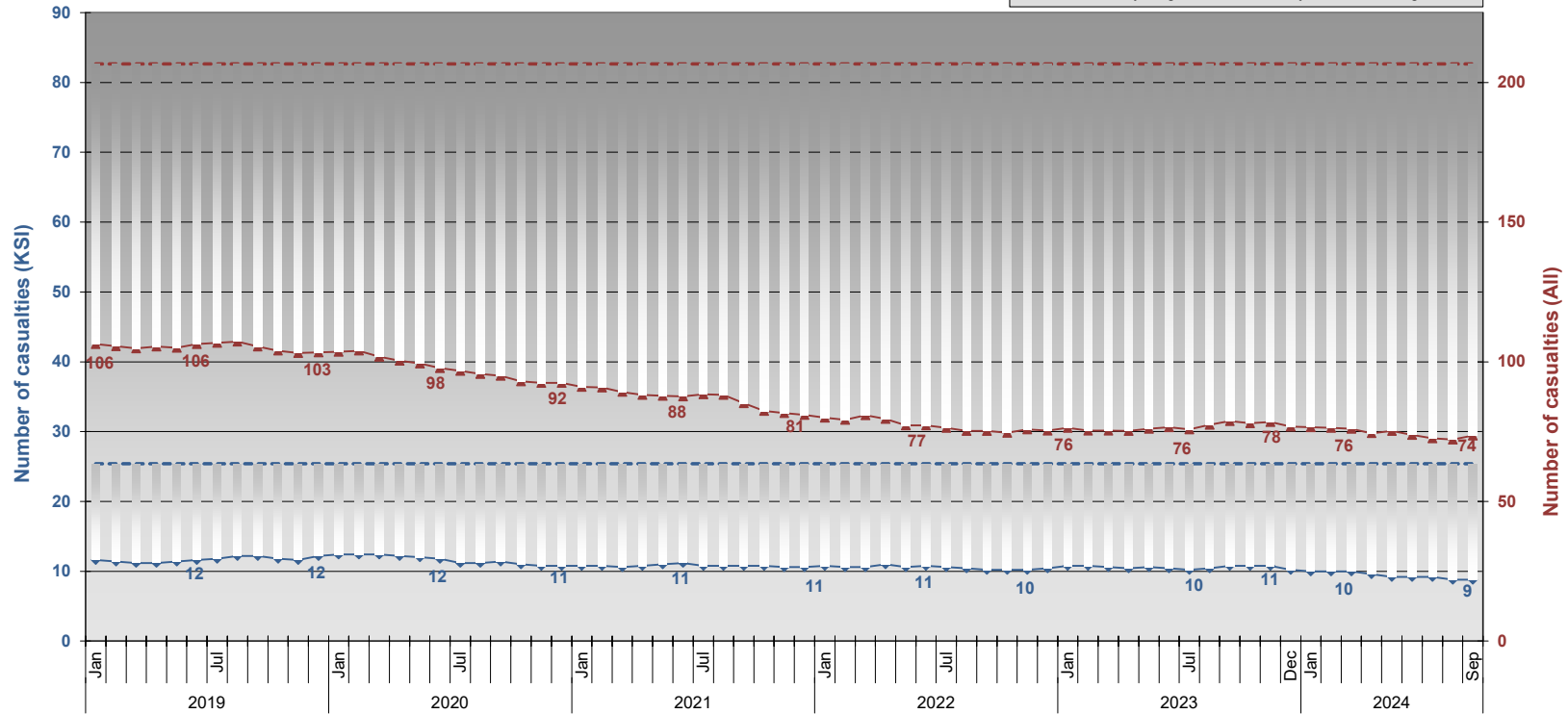
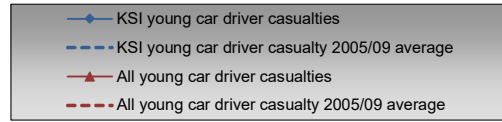
**Rolling five year average car user road traffic casualties**  
**Dorset Council**  
 January 2019 to September 2024



Figures shown are rounded to the nearest whole number, exact number plotted.  
 Figures included in the above chart are for the Dorset Council area only  
 Figures for 2022 are subject to change until signed off with the DfT early in 2024

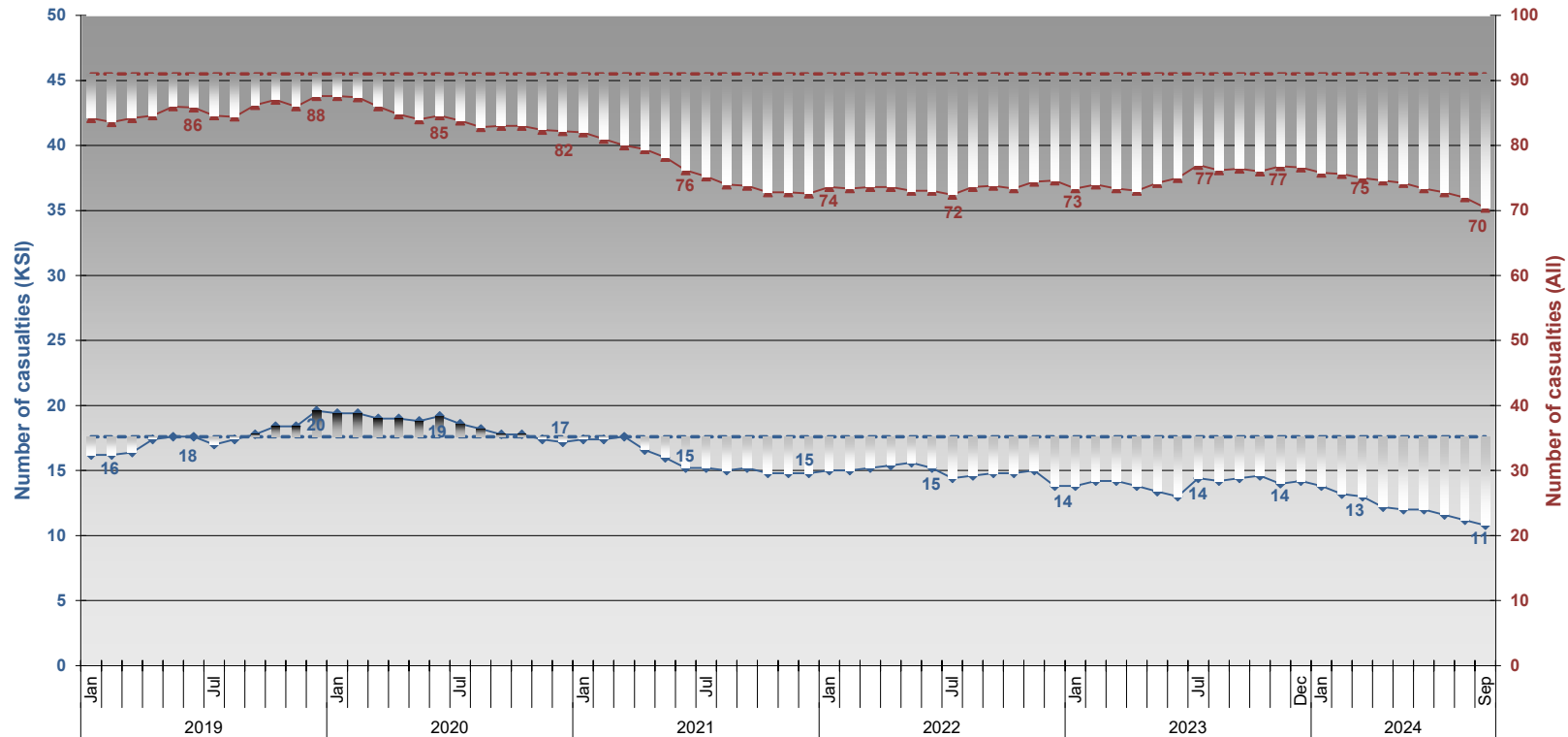
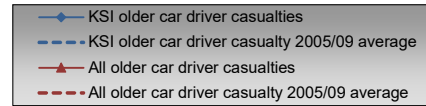


**Rolling five year average young car driver (17 - 24 years) road traffic casualties**  
**Dorset Council area**  
 January 2019 to September 2024



Figures shown are rounded to the nearest whole number, exact number plotted.  
 Figures included in the above chart are for the Dorset Council area only  
 Figures for 2022 are subject to change until signed off with the DfT early in 2024

**Rolling five year average older car driver (65+ years) road traffic casualties**  
**Dorset Council**  
 January 2019 to September 2024



Figures shown are rounded to the nearest whole number, exact number plotted.  
 Figures included in the above chart are for the Dorset Council area only  
 Figures for 2022 are subject to change until signed off with the DfT early in 2024