

Interim Chief Executive

Sam Crowe

Permanent Post

(Interim Appointee)

Grade: Chief Executive

Actual salary: £185,079

Email: Chief.executive@dorsetcouncil.gov.uk

Tel: 01305 221000

**Executive Director
for Corporate
Development and
Section 151 Officer**

Aidan Dunn

Permanent Post

Grade: Executive
Director

Actual salary:
£154,394

Salary range:
£137,465 to
£154,394

Tel: 01305 221000

**Executive Director
for People – Adults**

Jonathan Price

Permanent Post

Grade: Executive
Director

Actual salary:
£154,394

Salary range:
£137,465 to
£154,394

Tel: 01305 221000

**Executive Director
for People –
Children**

Paul Dempsey

Permanent Post

Grade: Executive
Director

Actual salary:
£154,394

Salary range:
£137,465 to
£154,394

Tel: 01305 221000

**Executive Director
for Place**

Jan Britton

Permanent Post
(Interim Appointee)

Grade: Executive
Director

Actual salary:
£154,394

Salary range:
£137,465 to
£154,394

Tel: 01305 221000

**Interim Director for
Public Health &
Prevention**

Permanent Post
(Interim Appointee)

Grade: Executive
Director

Salary range: £137,465
to £154,394

Tel: 01305 221000

**Director of Legal &
Democratic
(Monitoring Officer)**

Jonathan Mair

Permanent Post

Grade: Corporate
Director

Actual salary:
£126,181

Salary range: £97,966
to £126,181

Tel: 01305 221000

**Executive Director for Corporate
Development and Section 151 Officer**

**Corporate Director
for Finance &
Commercial**

Permanent Post

Grade: Corporate
Director

Salary range:
£97,966 to
£126,181

Tel: 01305 221000

**Corporate Director
for Strategy,
Performance &
Sustainability**

Permanent Post

Grade: Corporate
Director

Salary range:
£97,966 to
£126,181

Tel: 01305 221000

**Corporate Director
for Transformation,
Customer &
Cultural Services**

Permanent Post

Grade: Corporate
Director

Salary range:
£97,966 to
£126,181

Tel: 01305 221000

Executive Director for Place

**Strategic Director
– Weymouth
2040**

Permanent Post

Grade: Corporate
Director

Salary range:
£97,966 to
£126,181

Tel: 01305 221000

**Corporate
Director for
Waste Recycling
& Resource
Recovery**

Permanent Post

Grade: Corporate
Director

Salary range:
£97,966 to
£126,181

Tel: 01305 221000

**Corporate
Director for
Highways &
Engineering**

Permanent Post

Grade: Corporate
Director

Salary range:
£97,966 to
£126,181

Tel: 01305 221000

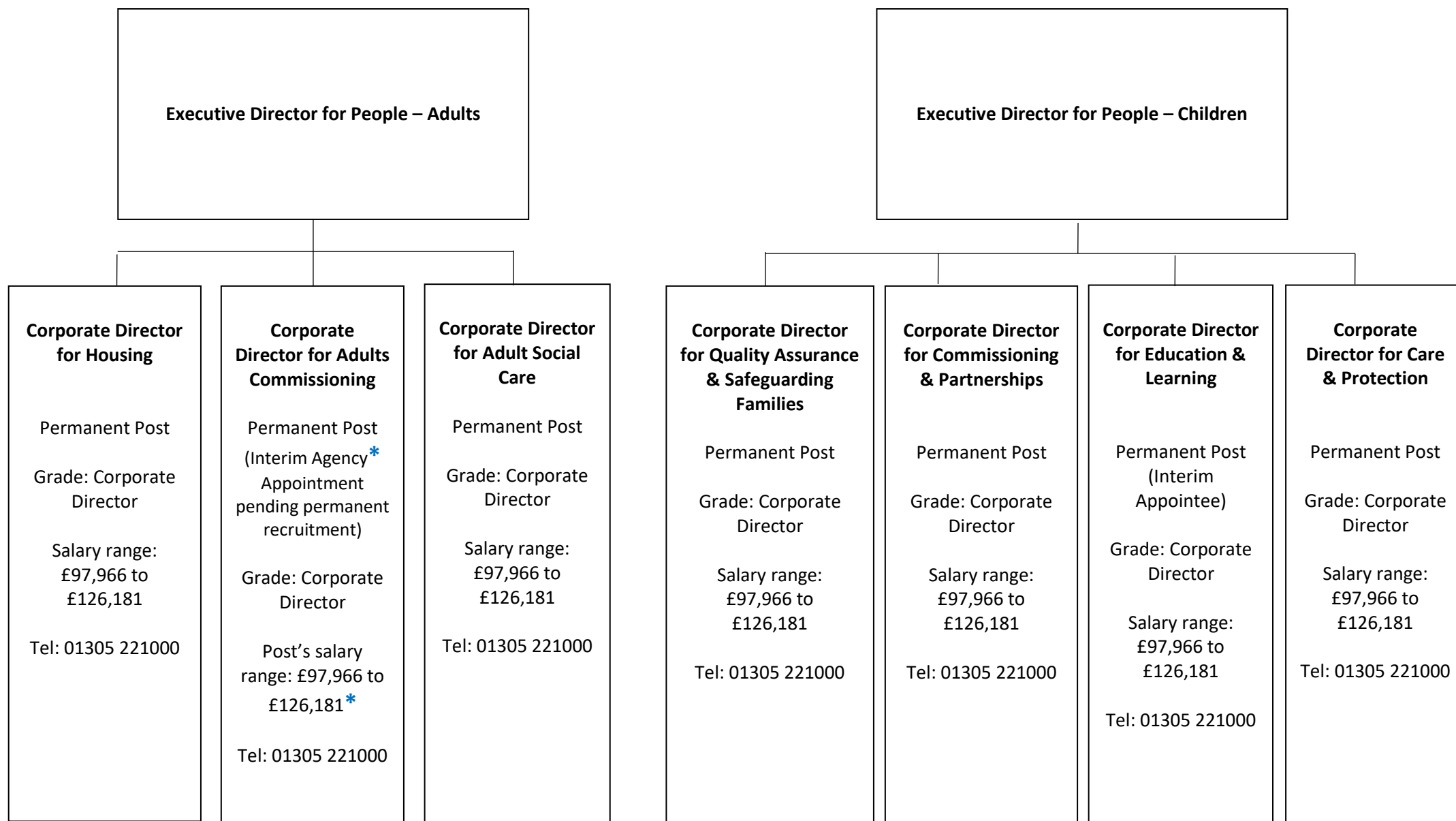
**Corporate
Director for
Planning**

Permanent Post

Grade: Corporate
Director

Salary range:
£97,966 to
£126,181

Tel: 01305 221000



** Total remuneration paid will not exceed that budgeted for a permanent post holder*

