



# Dorset Council Local Plan Options Consultation

Appendix D: Opportunity areas for renewable energy  
August 2025

## Contents

Contents .....	2
Introduction .....	3
Wind energy.....	5
Solar energy .....	8
Battery storage.....	10

## Introduction

The maps in this document show the proposed areas of opportunity for onshore wind turbines, ground mounted solar and battery energy storage systems.

The areas are considered to be broadly suitable for varying scales of these technologies.

We have carried out a strategic assessment of the potential for these three types of development, including technical considerations such as wind speed and grid connection, and excluding areas of land with physical constraints such as built areas. We have also undertaken an assessment of landscape sensitivity to these types of development at various scales. We have combined what is considered technically feasible with areas where landscape sensitivity is lower

To look at the maps for the different scales of wind, solar and battery energy storage select, go to the Key on the left-hand side and select the eye icon.

## Additional considerations for development

Detailed evidence would need to be provided the time of a planning application in order to determine the suitability of individual sites or proposals.

It should be noted that there are also certain additional constraints and considerations applicable to these types of development that would be subject to further assessment at any planning application stage. These include:

- Wind data - This would likely require site specific monitoring for an appropriate period in order to confirm accurate data for a site.
- National Landscapes - The management plans for the Dorset National Landscape and the Cranborne Chase National Landscape do not restrict renewable developments within the designations. As such, no land was excluded from assessment on this basis and landscape sensitivity was assessed across the Dorset Council area. Site specific assessment of landscape and visual impact would be required to assess the potential suitability of sites for wind development for any proposal and due regard will need to be given to a site's location within or in proximity to the National Landscapes.
- Site specific features and characteristics - Developments outside protected areas may potentially have an impact on amenity and sensitive 'receptors' such as protected species. For example site specific consideration would need to be given to impacts on the core sustenance zones around bat roosts, migration routes, and impact risk zones for sites of special scientific interest.
- Aviation – Operational airports and airfields were considered to be constraints to wind development and were excluded from the areas of opportunity. However, airport safeguarding and consultation zones were not used to restrict potentially suitable

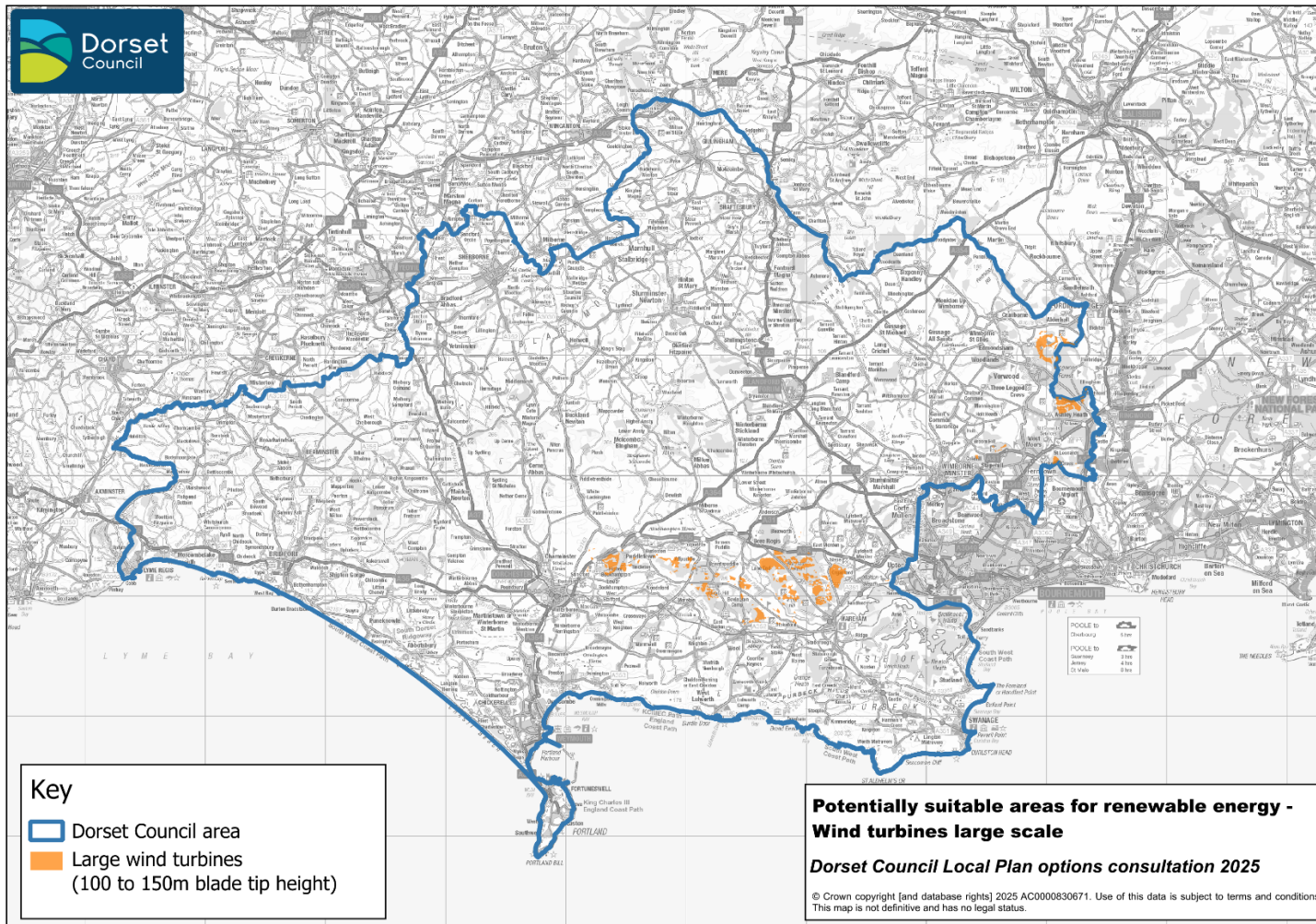
areas, as these impacts require site by site consideration and mitigation may be available to address any issues.

It should be noted that the inclusion of an area within the broad areas of opportunity for wind, solar or battery energy storage development does not constitute any form of planning permission. Such development within these areas would require planning approval.

Please note that the maps can also be viewed on the online consultation at [www.dorsetcouncil.gov.uk/dorset-is-changing](http://www.dorsetcouncil.gov.uk/dorset-is-changing). Here you will be able to navigate around Dorset and zoom in to see areas of the maps at a larger scale and in more detail.

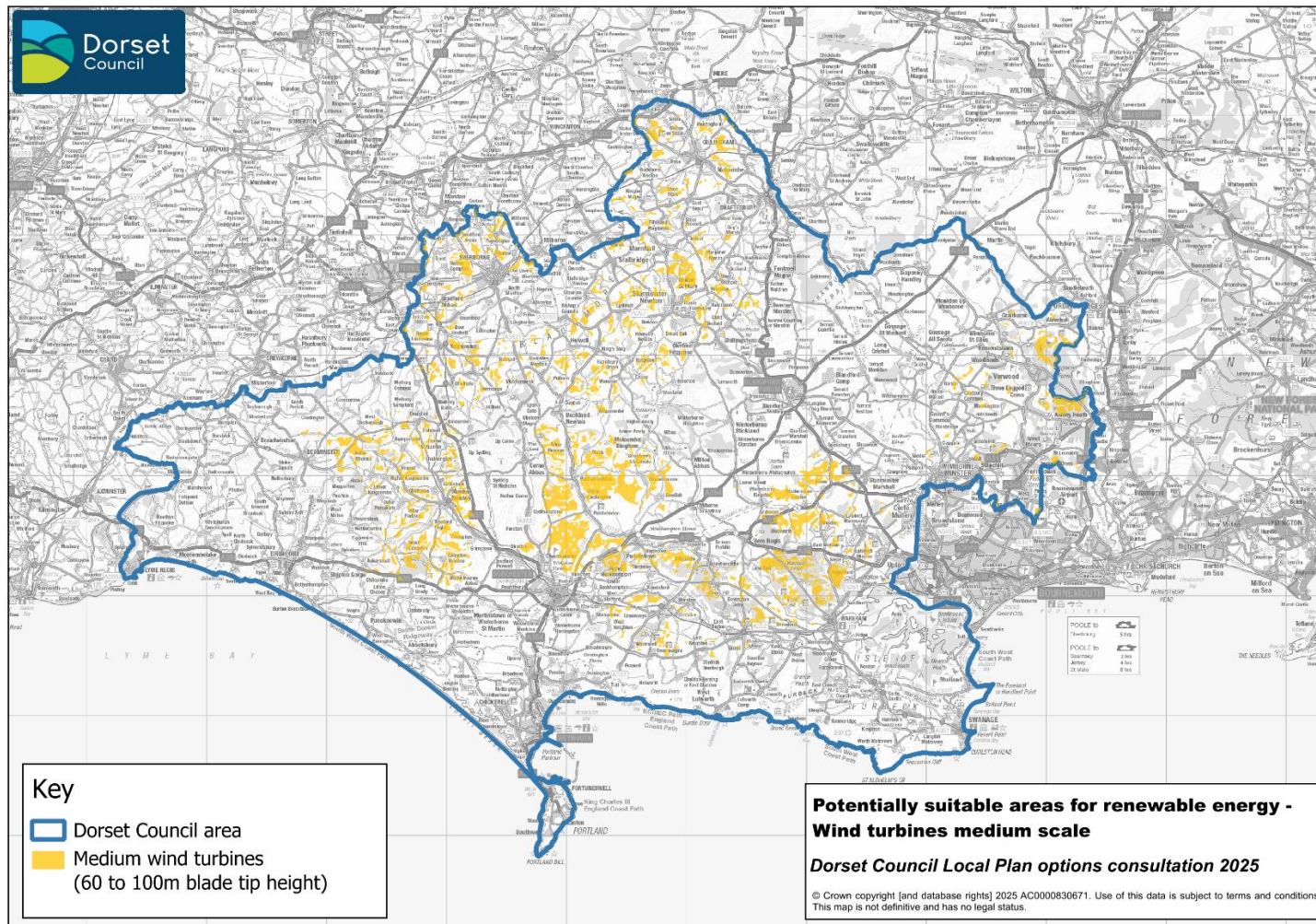
## Wind energy

### Large scale wind turbines



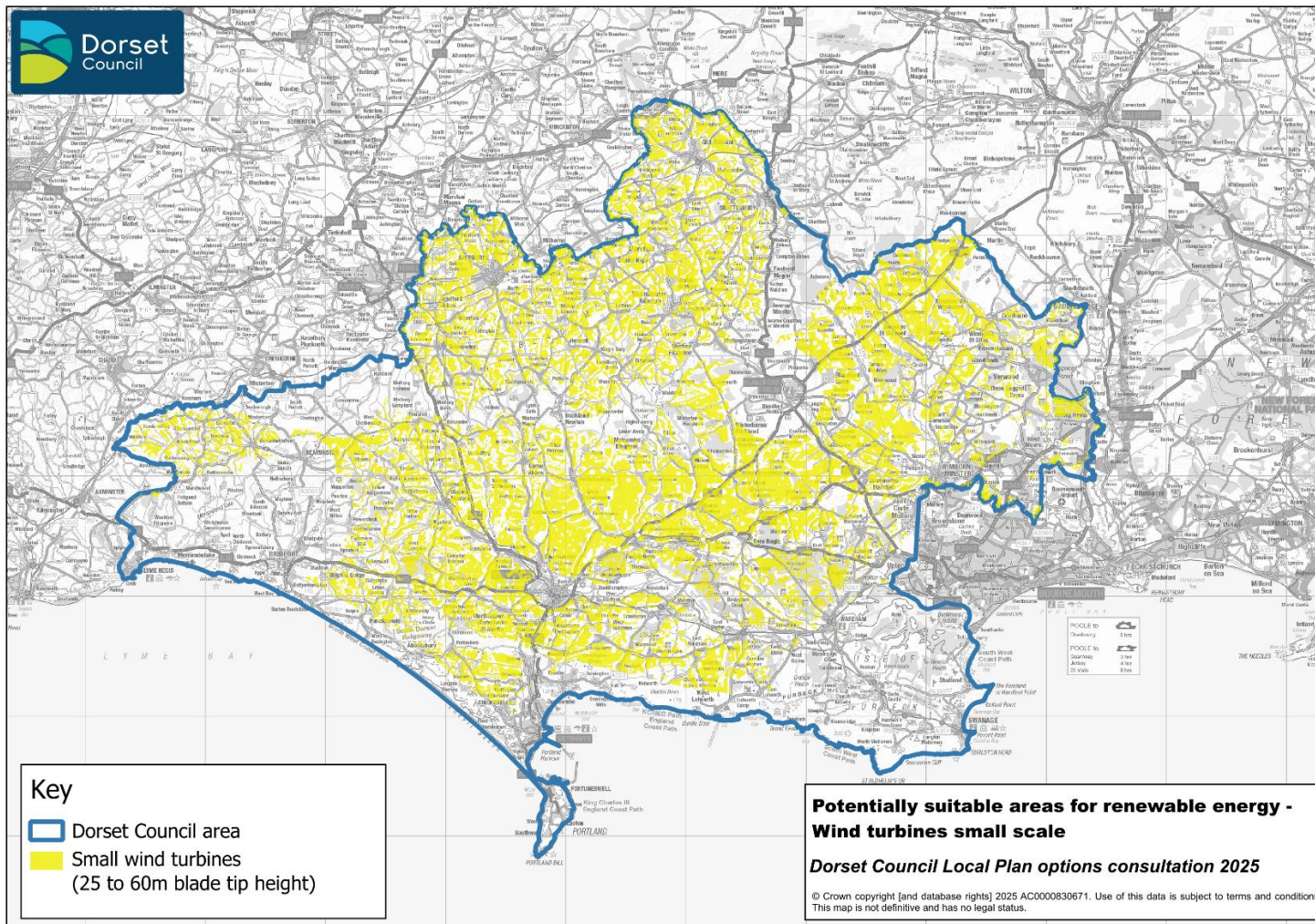


## Medium scale wind turbines





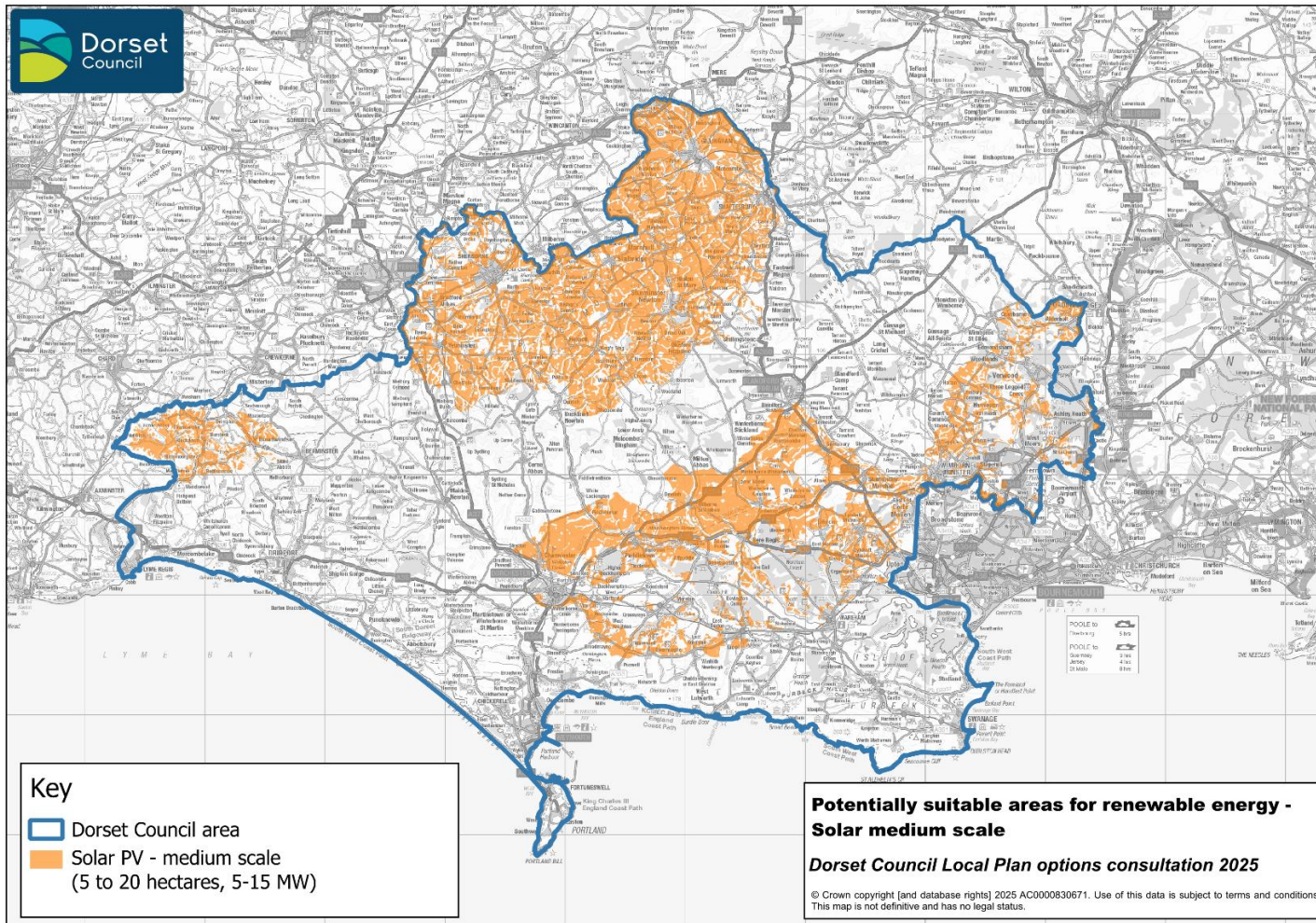
## Small scale wind turbines



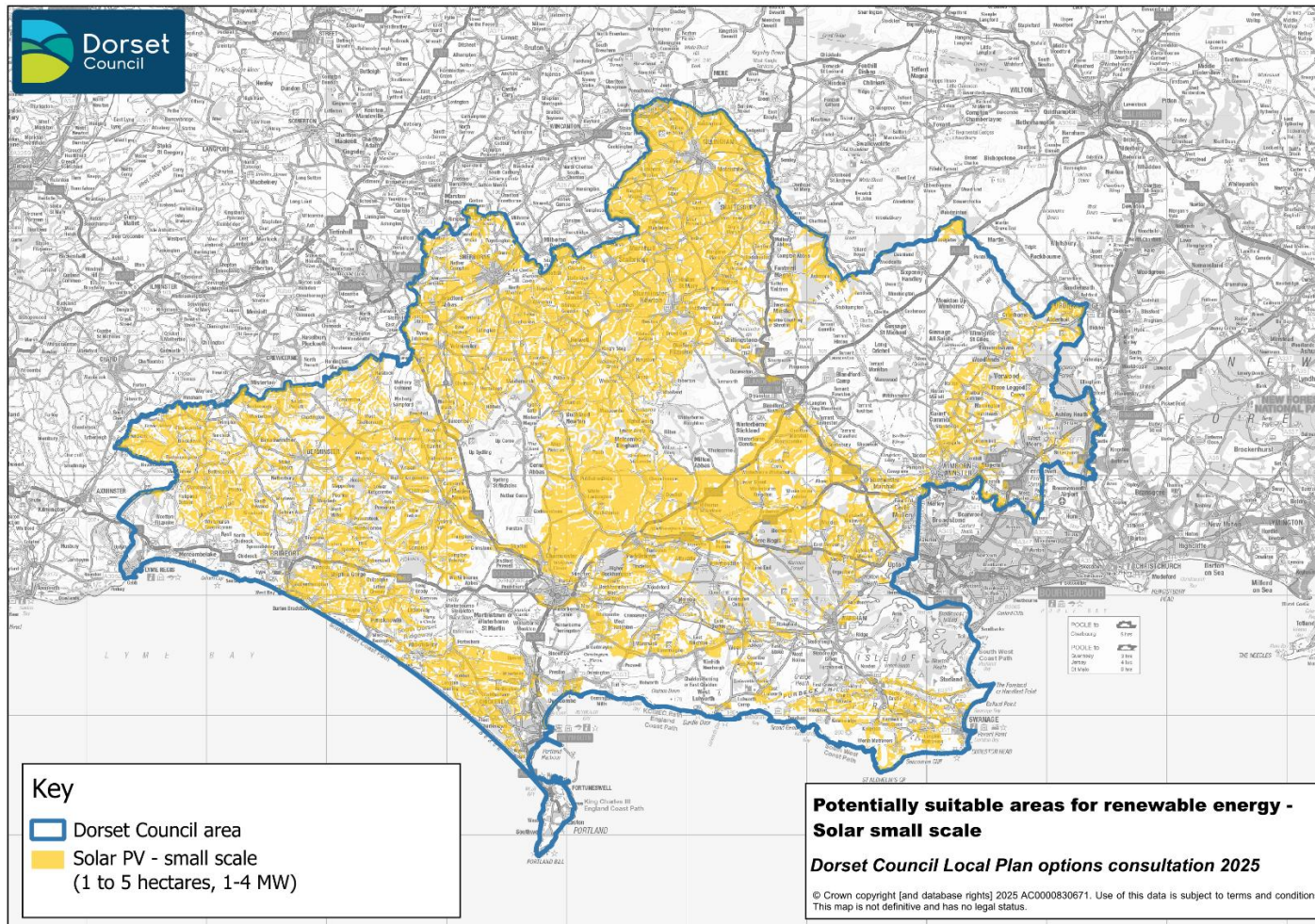


## Solar energy

### Medium scale solar



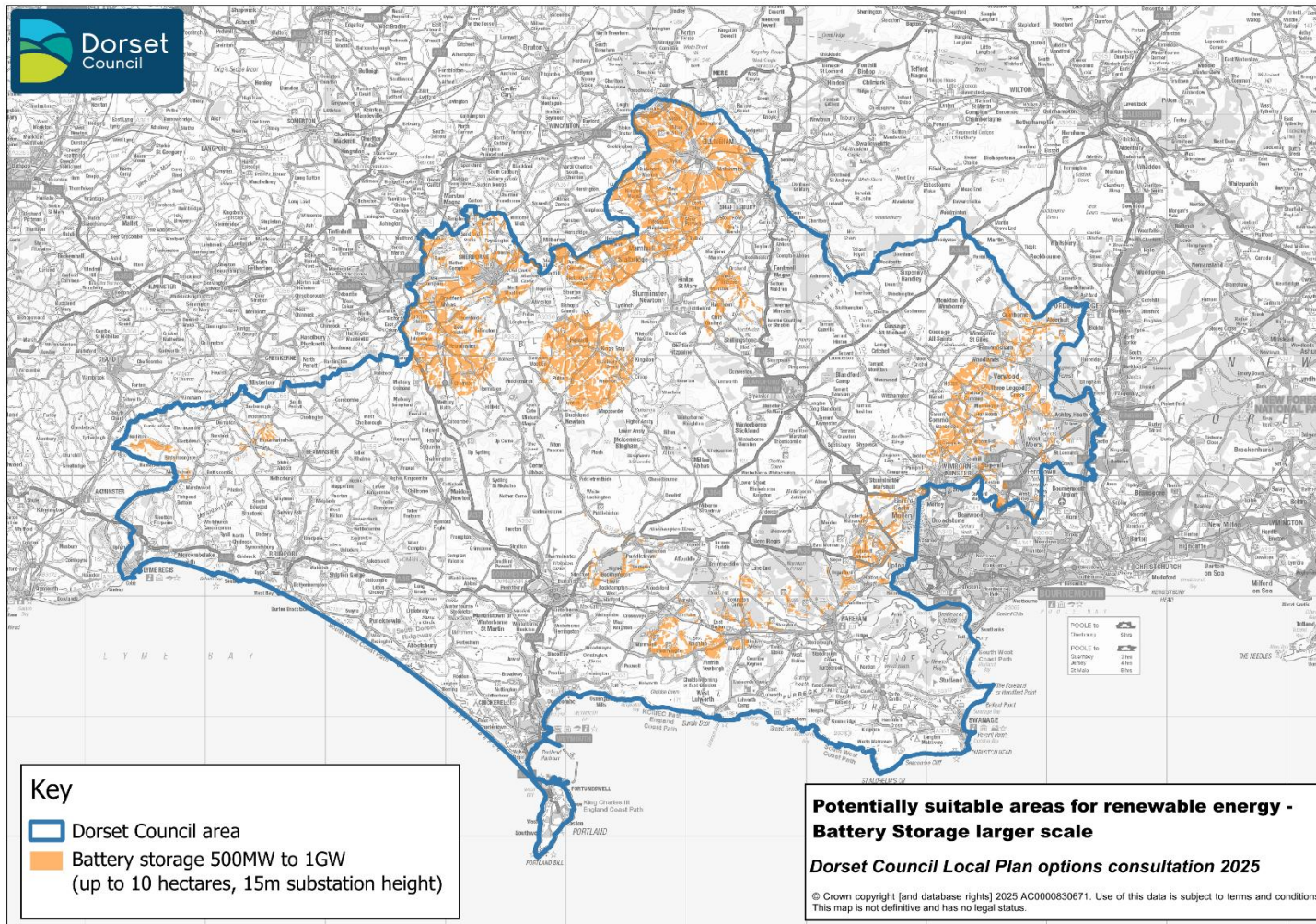






## Battery storage

### Larger scale battery storage





## Smaller scale battery storage

